



Business Continuity

One-button failover for disaster recovery

Business Continuity is a methodology many businesses are pursuing as a way to eliminate disruption of applications and access to data. Going beyond traditional disaster recovery, business continuity solutions aim to eliminate downtime & disruption by simplifying the failover process, while protecting data. One emerging technology is Continuous Data Protection, which aims to further protect against data loss by providing the ability to recover to any point-in-time (APIT).

TRUSTED TECHNOLOGY

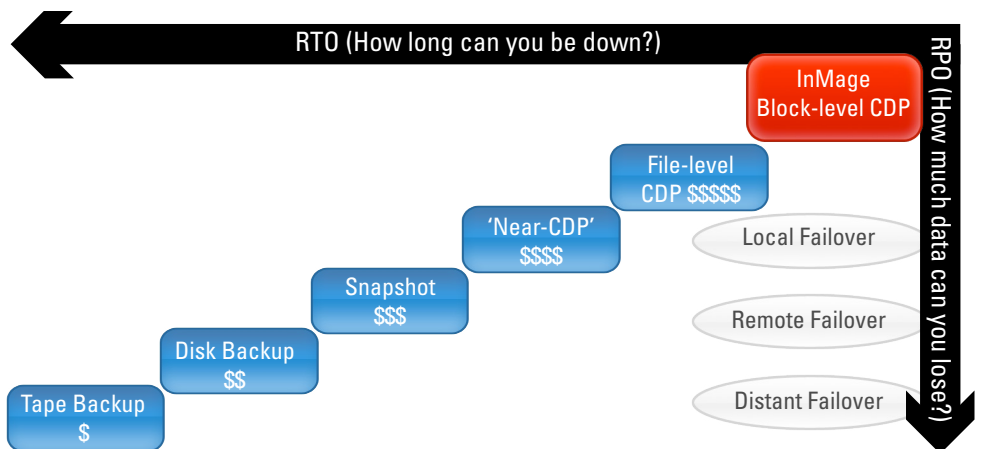
InMage Systems, Inc. was founded in 2001 by Kumar Malavalli, the founder of Brocade Communications. InMage is a technically-focused company that is a pioneer of CDP technology. With 6 patents in process, InMage provides a powerful & robust Business Continuity solution that is cost-effective and flexible enough to meet the needs of small- to medium-sized businesses.

VMWARE-OPTIMIZED

InMage's solution greatly reduces the cost of Business Continuity and Disaster Recovery implementations. In addition, InMage provides enhanced integration with virtualized technologies for greater resource optimization. This solution also includes a data planning & modeling feature, which provides the ability to create "what-if" scenarios, as well as track data usage & bandwidth patterns, so you can provision resources to optimize your data protection scheme, while achieving mandated SLAs.

BACKUP & RECOVERY CHOICES

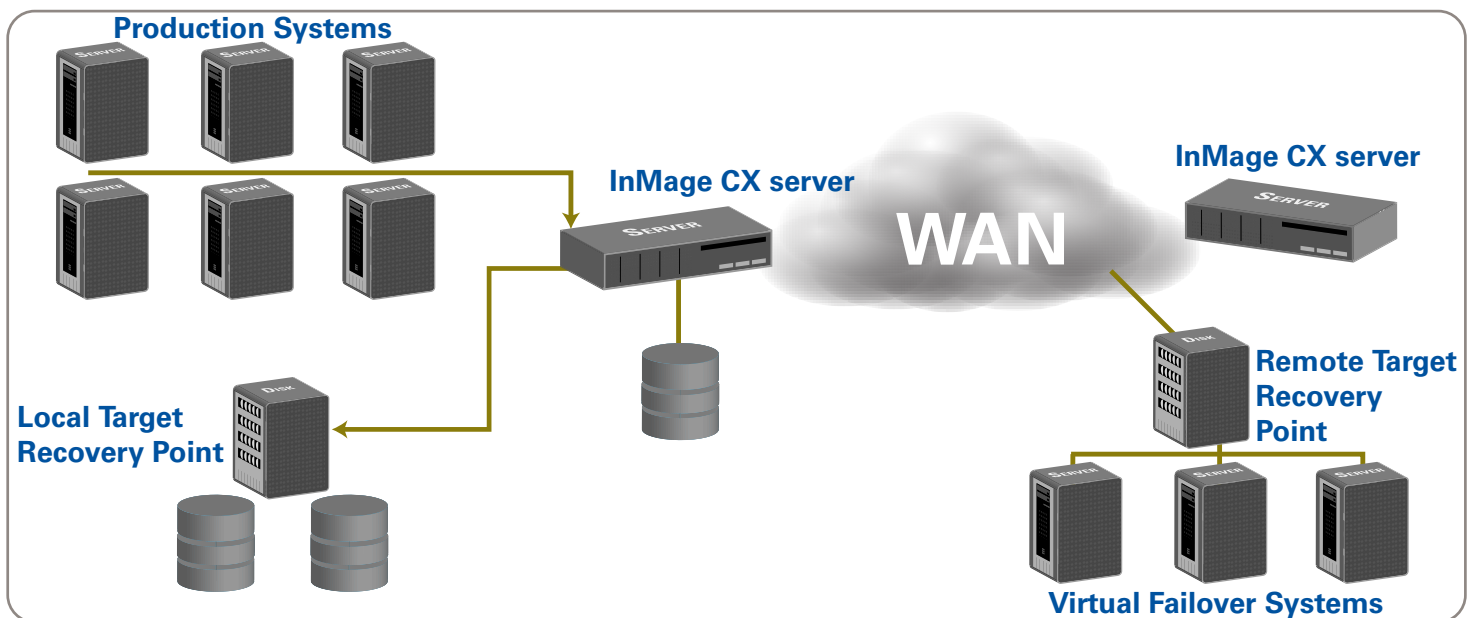
- » 'NEAR-ZERO' RPO & RTO
- » TIME & EVENT-BASED REVISIONING
- » FAST WAN REPLICATION
- » FAST DISTRIBUTED APPLICATION RECOVERY



"Creating multiple copies of data through the use of volume managers or filter drivers, replicating data from one location to another and journaling changes to data are all well-established IT concepts. What is new is combining these techniques to offer a new type of recovery solution." - Dave Russell, Gartner Analyst

FEATURES

- » integrated DR and CDP – perform backups of specific files or entire volumes of structured & unstructured data
- » hardware-independent – eliminates the inflexible, proprietary solutions of other CDP vendors
- » one-button failover capability – application-specific intelligence allows for graceful shutdown and remote start of applications
- » reverse recovery – simplifies fail-back by capturing only changed data in failover scenarios, to avoid reloading production servers & storage
- » event-based recovery – insert “bookmarks” into the data stream, even with synchronized multi-server applications



Executive risk assessment

North American Systems can help you identify risks and vulnerabilities in your IT infrastructure, and various recommended actions your business can take to reduce these risks.

Business Impact Analysis

We will also review with you how a primary site failure could impact your business. In addition, we will assist you in confirming which functions, systems, and processes are essential to your business’s survival.

Recovery Strategy

With our knowledge of “best-of-breed” software and practices we can help you develop, review and confirm disaster recovery plans that are in place.

Business Continuity Plan

Business Continuity plans must choose what RPO (recovery point objective) and RTO (recovery time objective) are important for mission-critical applications. Taking into account these priorities, we can help you develop a comprehensive guide of how to restore operation of critical information services and maintain the availability of data.

Plan Maintenance

In addition to keeping your Business Continuity solution affordable, we can continue to help you refine and improve your Business Continuity plan and operations, while minimizing ongoing support & maintenance costs.